

**RENVOOI:**

**ALGEMEEN:**

- metselwerk
- gewapend beton
- grondaanvulling
- klinkers
- glas
- betondak

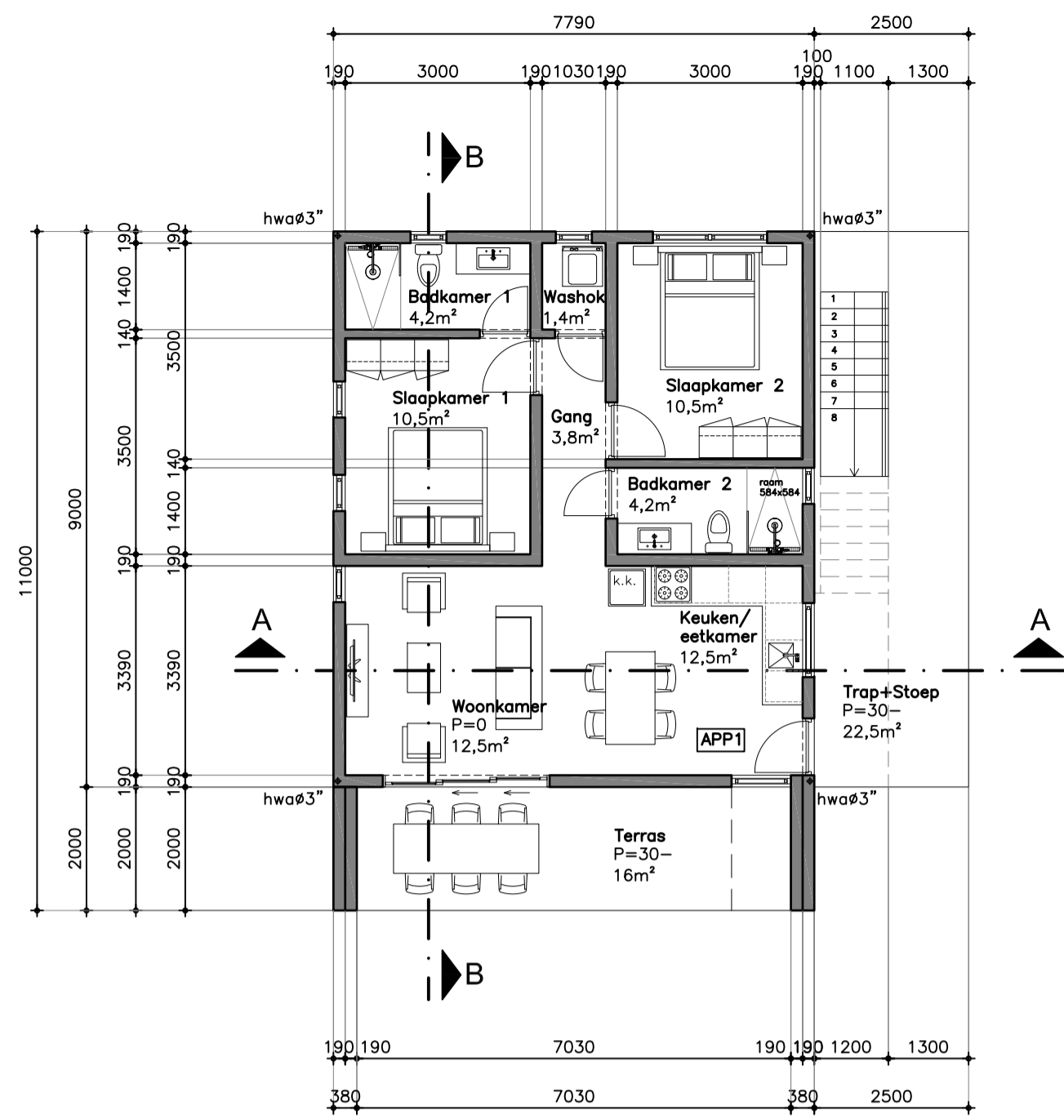
**VLOEROPBOUW P=0:**  
 -vloerafwerking 50mm  
 -gewapend beton dik 150mm,  
 -plastiek folie  
 -aangeplempte diabaasaanvulling

**VLOEROPBOUW P=2880+:**  
 -vloerafwerking 50mm  
 -gewapend beton dik 200mm,  
 volgens opgave constructeur !!

**OPBOUW PLATDAK:**  
 -TPO dakbedekking of Roofcoating  
 -afwerklaag 50mm op afschot 1cm/m  
 -gewapend beton dik 200mm,  
 volgens opgave constructeur !!

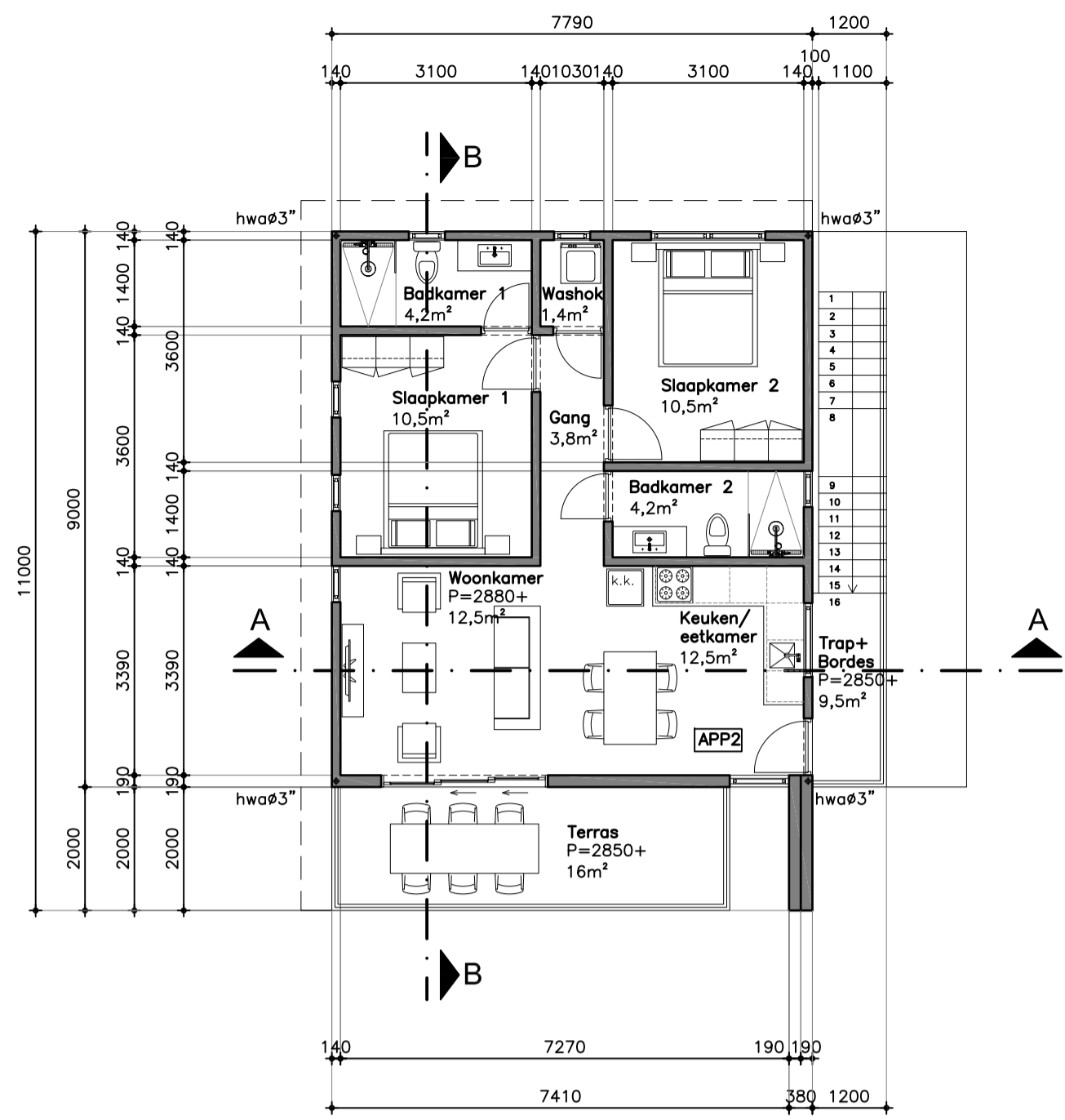
**RIOLERING:**

- |        |                     |            |
|--------|---------------------|------------|
| wl=    | wastafel            | pvc ø2"    |
| d=     | douche              | pvc ø2"    |
| wc=    | water closet        | pvc ø4"    |
| aanr=  | aanrecht            | pvc ø2"    |
| st.l.= | standleiding        | pvc ø2"/4" |
| ontl.= | ontluchting         | pvc ø2"/4" |
| os=    | ontstoppingsstuk    | pvc ø2"/4" |
| wm=    | wasmachine          | pvc ø2"    |
| hwo=   | hemelwaterafvoer    | pvc ø3"    |
|        | (lozen op maaiveld) |            |



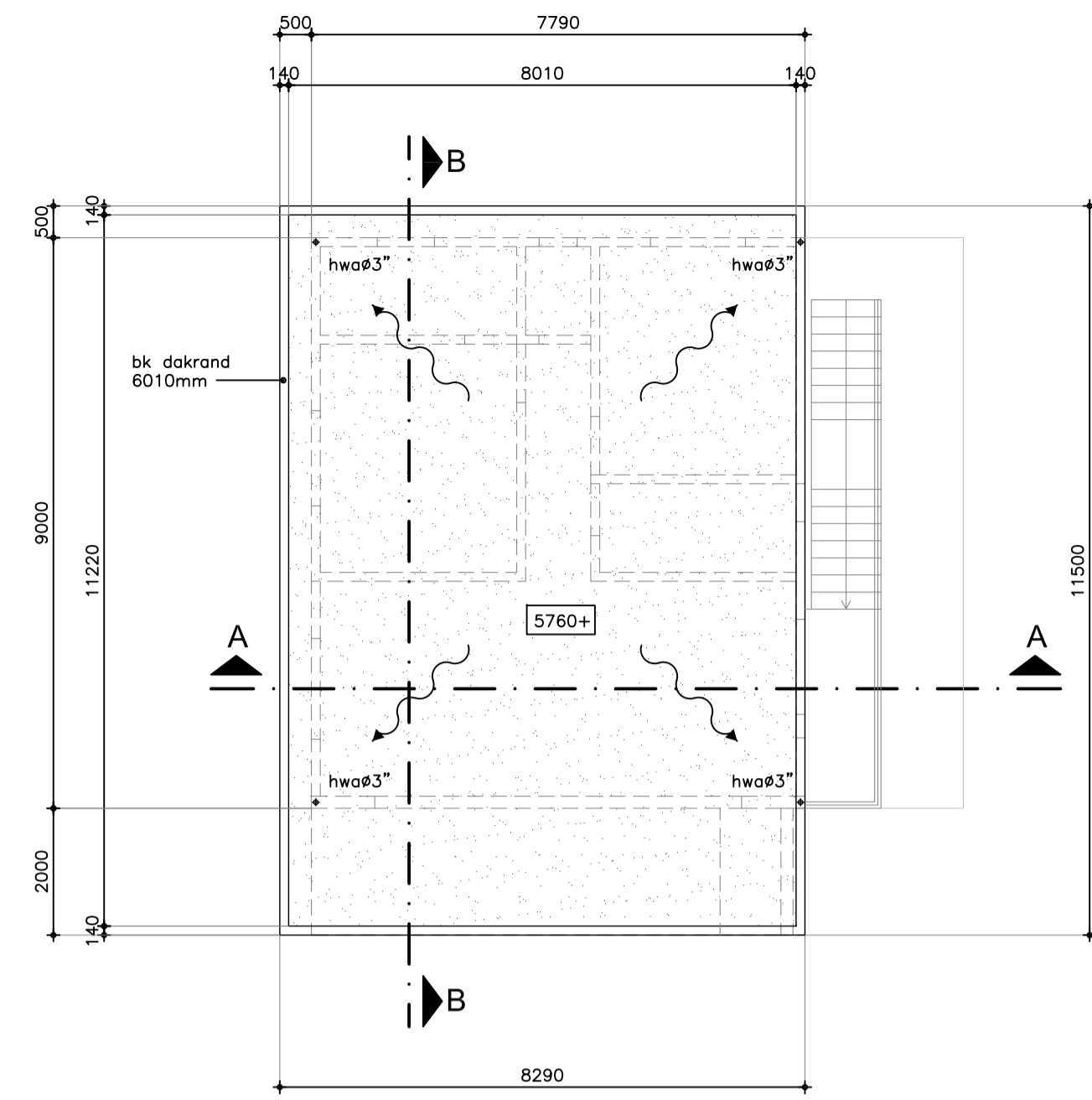
**PLATTEGROND BEGANE GROND P=0  
 APPARTEMENT TYPE A**

Oppervlakte: 1 Appartement= 70m<sup>2</sup>  
 Terras 16m<sup>2</sup> - Entree stoep+Trap =22,5m<sup>2</sup>

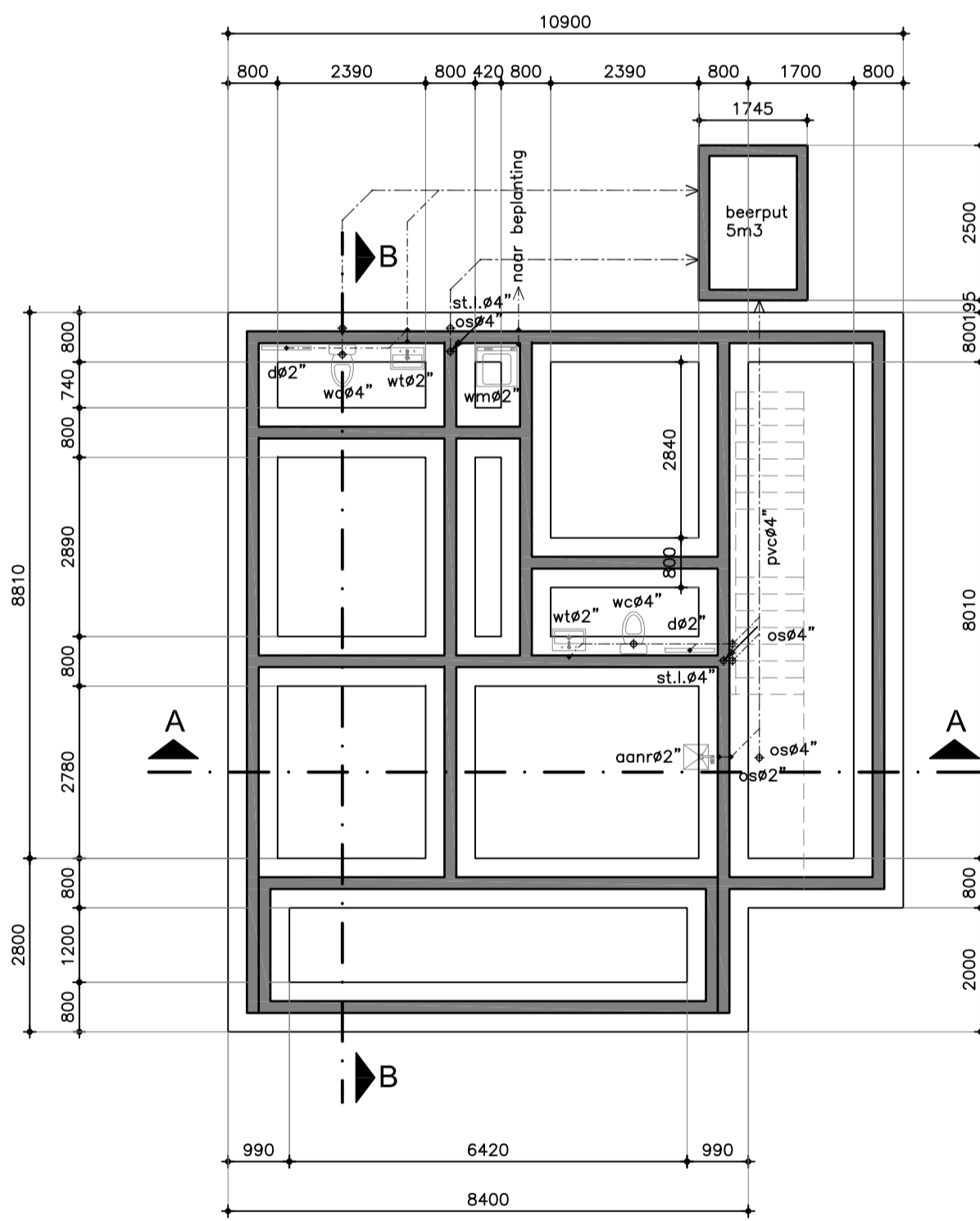


**PLATTEGROND VERDIEPING P=2880+  
 APPARTEMENT TYPE A**

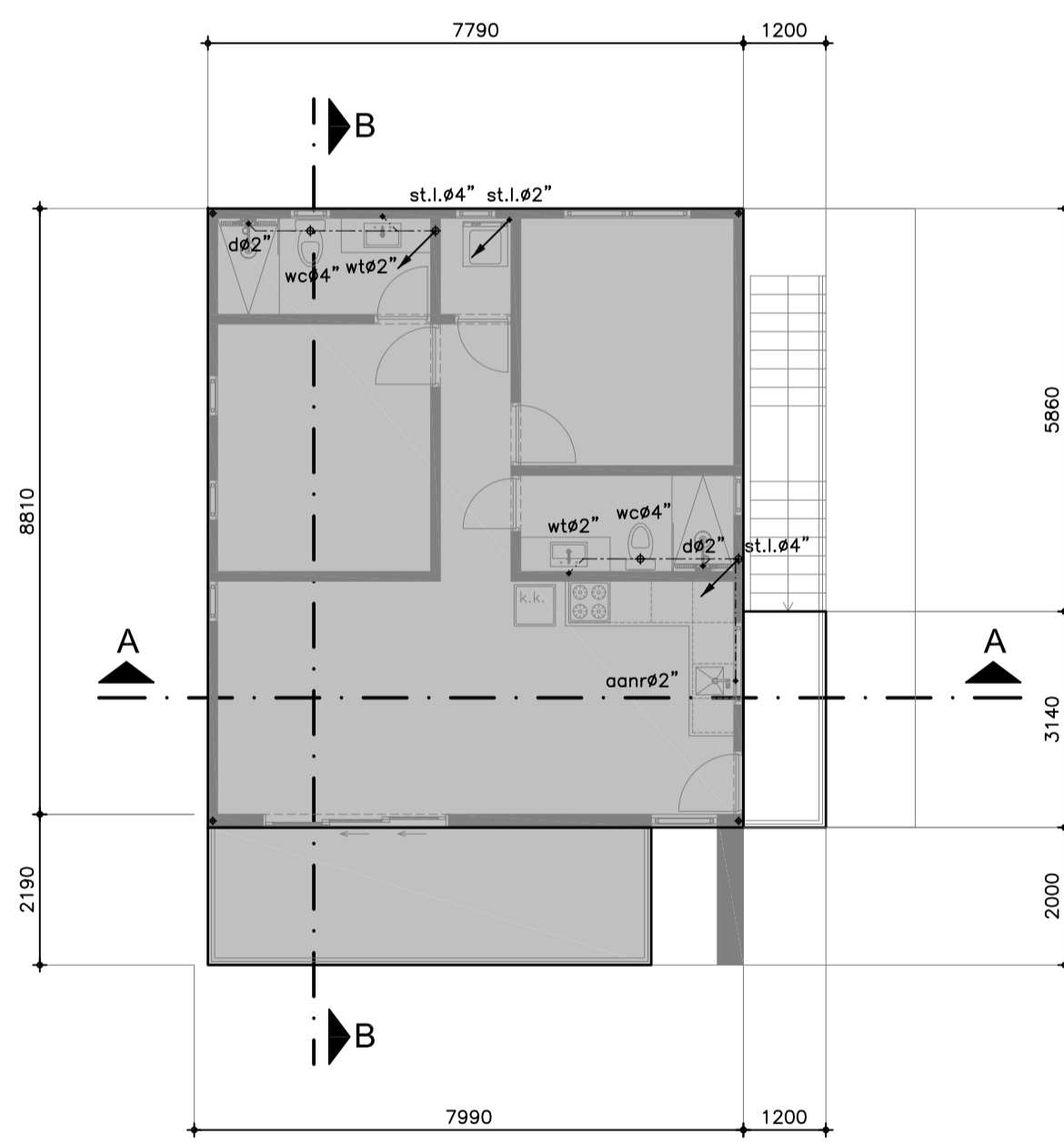
Oppervlakte: 1 Appartement= 70m<sup>2</sup>  
 Terras 16m<sup>2</sup> - Trap+Bordes =9,5m<sup>2</sup>



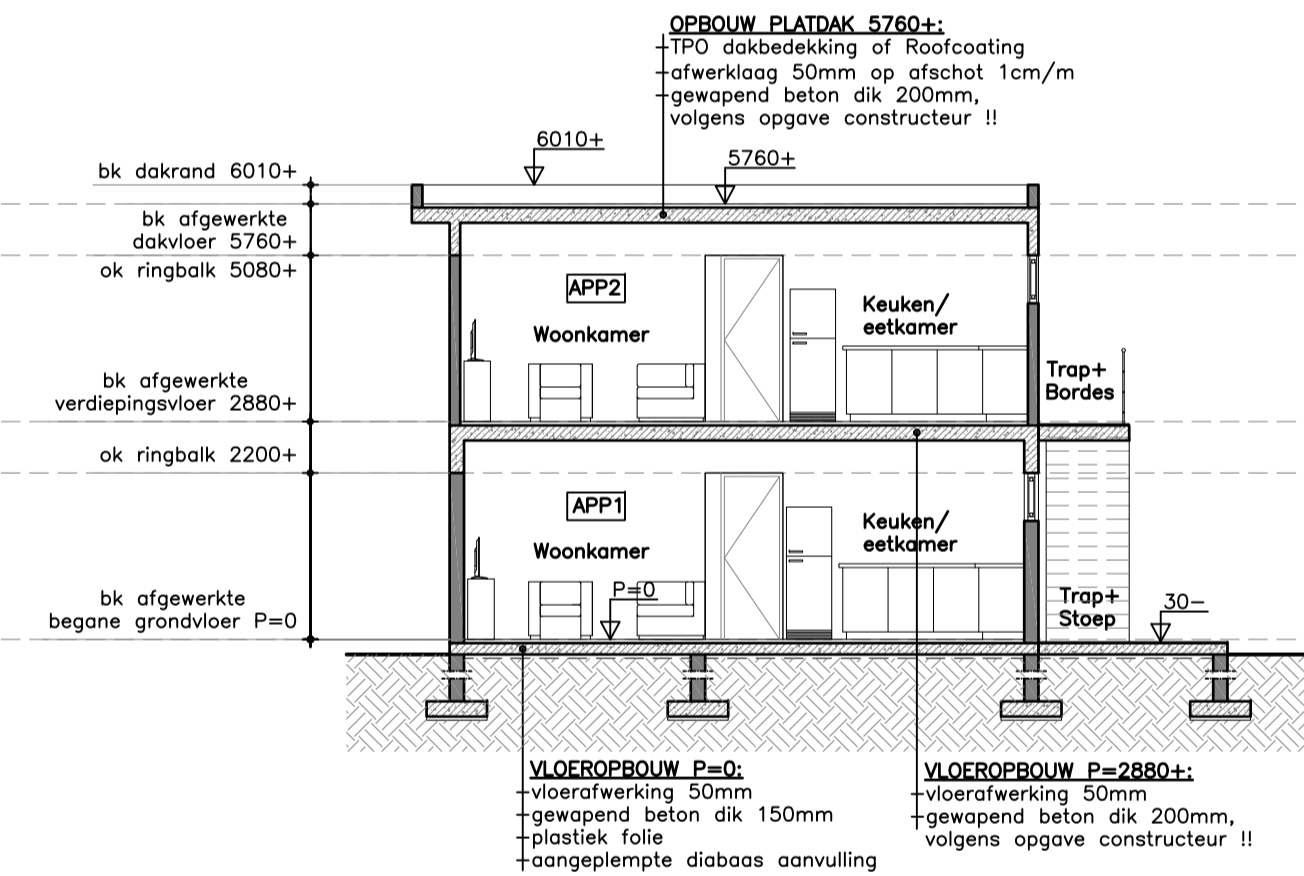
**DAKPLAN  
 APPARTEMENT TYPE A**



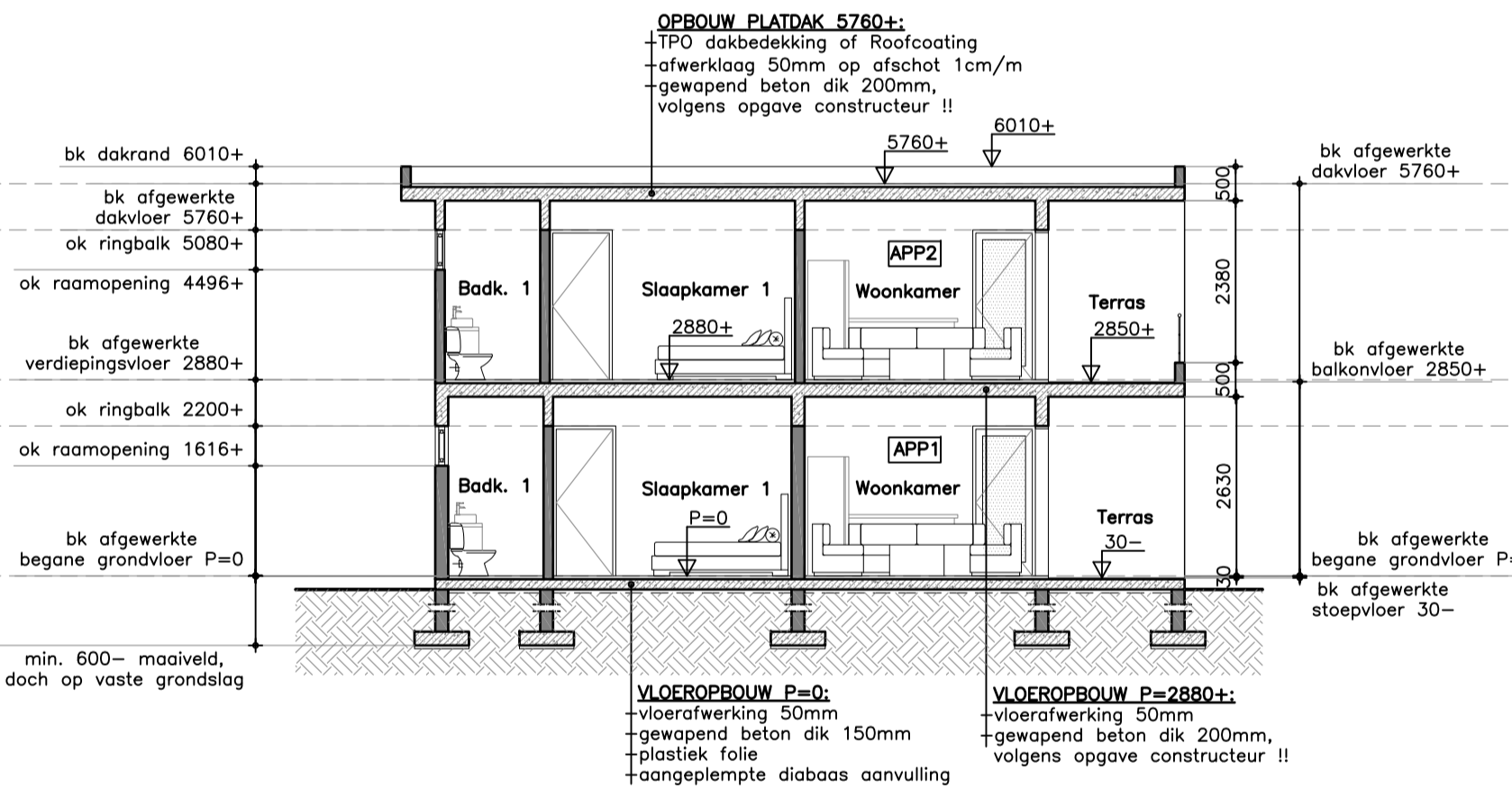
**FUNDERINGS- RIOLERINGSPLAN BEGANE GROND  
 APPARTEMENT TYPE A**



**RIOLERINGSPLAN VERDIEPING  
 APPARTEMENT TYPE A**



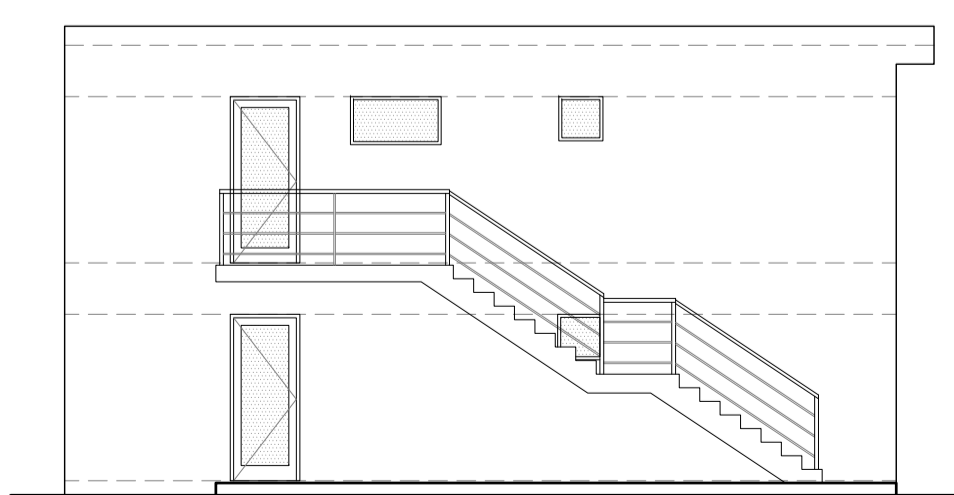
**DOORSNEDE A-A**



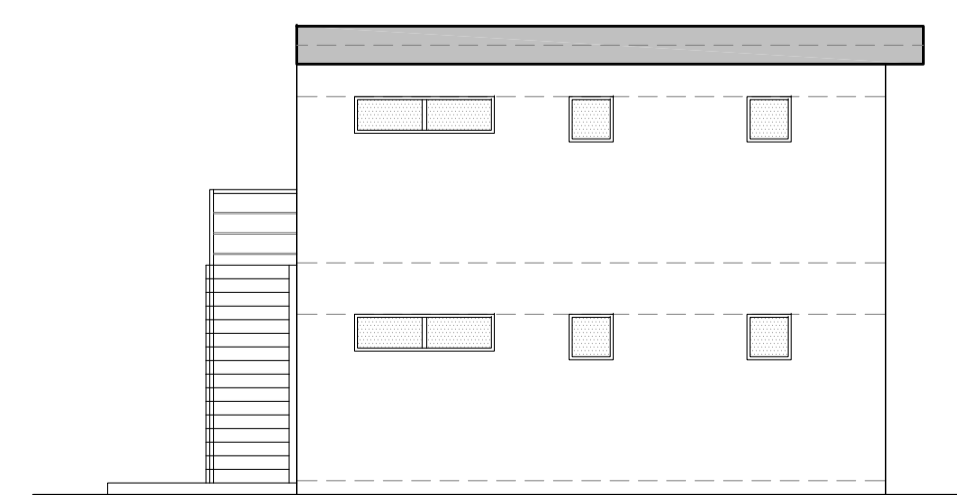
**DOORSNEDE B-B**



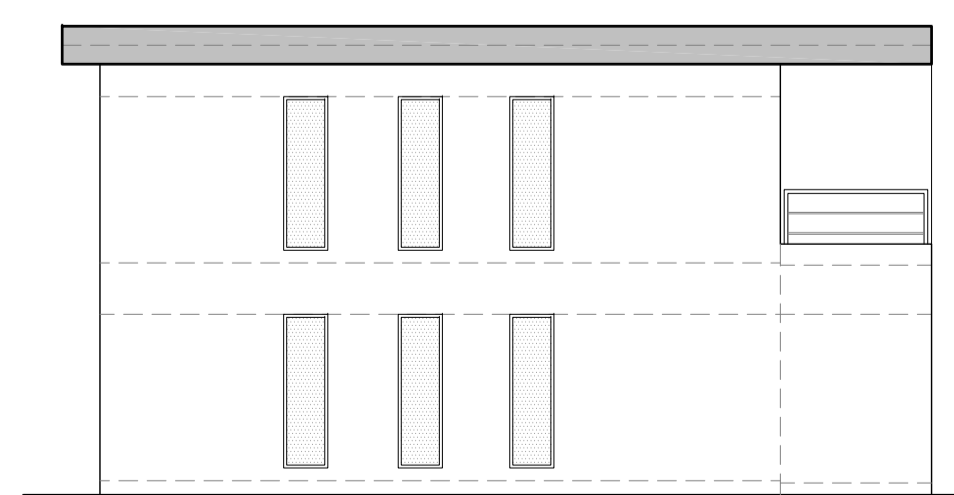
**VOORGEVEL  
 APPARTEMENT TYPE A**



**RECHTER ZIJGEVEL  
 APPARTEMENT TYPE A**



**ACHTERGEVEL  
 APPARTEMENT TYPE A**



**LINKER ZIJGEVEL  
 APPARTEMENT TYPE A**

